



Starting Valve Delgado Type 2988 and 2988B



Starting Valve

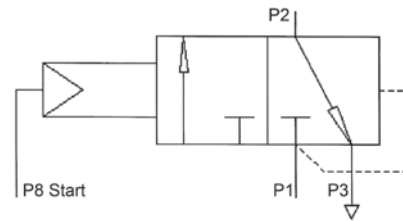
The Starting Valve Delgado is a Main Starting Valve with smallest space requirements, optimised reliability and lowest costs.

The type 2988B includes a Pilot Solenoid Valve, whereas type 2988 is controlled by external pilot air. As a result of a solid design layout Delgado is extremely reliable, shockresistant and assures high internal and external tightness. Therefore Delgado assures a fail-safe starting of marine and stationary 4-stroke engines at lowest costs.

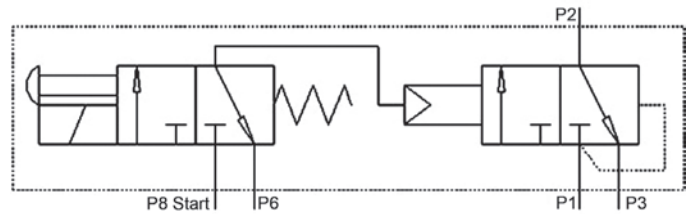
Function	3/2-way Valve NC (type 2988) 3/2-way Solenoid Valve NC (type 2988B)
Operating pressure	P1: 10 ... 30 bar
Pilot pressure	P8: P1 ± 1 bar
Test pressure (static)	1.5 × 30 bar = 45 bar
DN (Main Valve)	50 mm
Connection	Port No. P1: Flange PN 40 / 50 Port No. P2: Flange PN 40 / 50 Port No. P3: Flange PN 40 / 50 Port No. P8: M14 × 1.5
Material	Valve body: Aluminium anodised Piston: Aluminium Seals: NBR
Mounting position	Arbitrary
Media	Compressed air according ISO 8573.1 - Particles: Quality 5 - Dew point: Quality 5 - Oil content: Quality 3
Ambient temperature	-20 °C ... +65 °C
Flow rate	Kv 48 m ³ /h
Leakage	External: Bubble free Internal: ≤ 0.12 Nl/h
Solenoid for type 2988B	Type 2-A-37 24V DC, 11 Watt -20 °C ... +100 °C, IP 65 Intermittent duty cycle S3 10% – 10 min

Order information

Type	Art.-No.	Weight
Type 2988	245.556.00	5.6 kg
Type 2988B	245.557.00	6.4 kg



Type 2988



Type 2988B

