

PRODUCT INFORMATION

SEITZ COOLEX Type 2799

APPLICATION AND FUNCTION

The COOLEX© solenoid valve is specially designed to meet the high requirements of PET blow moulding applications. COOLEX© solenoid valve is used as a cooling valve for HOTFILL applications.

YOUR BENEFITS

OUR TECHNOLOGY

- ✓ 40 bar 32/2 way, cooling valve
- ✓ internal Pilot operated
- ✓ higher air flow DN 16
- ✓ life cycle more than 20 Mio

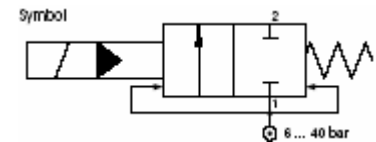
YOUR BENEFITS

- most economic solution for cooling application
- most cost saving installation
- most efficient cooling performance
- higher productivity

TECHNICAL FEATURES

Function 2/2-way solenoid valve, NC, pilot operated with internal air supply
 Pressure range 6 ... 40 bar

Port connections
 1 inlet G 3/4
 2 consumer G 3/4



Connection
 1 = Inlet
 2 = Consumer

Orifice size DN 16 mm

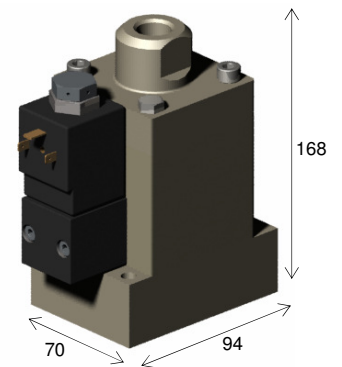
Housing material coated aluminium
 Weight 2,2 kg
 Media air, quality according to ISO 8573-1, quality class 2.3.2

Repeatability +/- 3 ms

Operating temperature 10 ... 30 °C
 Ambient temperature 10 ... 50 °C

Standards FDA H11
 Life cycles 20 millions cycles

Solenoid
 Voltage 24 V DC ± 10%
 Power 10 W



ORDER INFORMATION

Order no. 161.601.00 COOLEX Type 2799
 Order no. 161.601.01 Maintenance kit