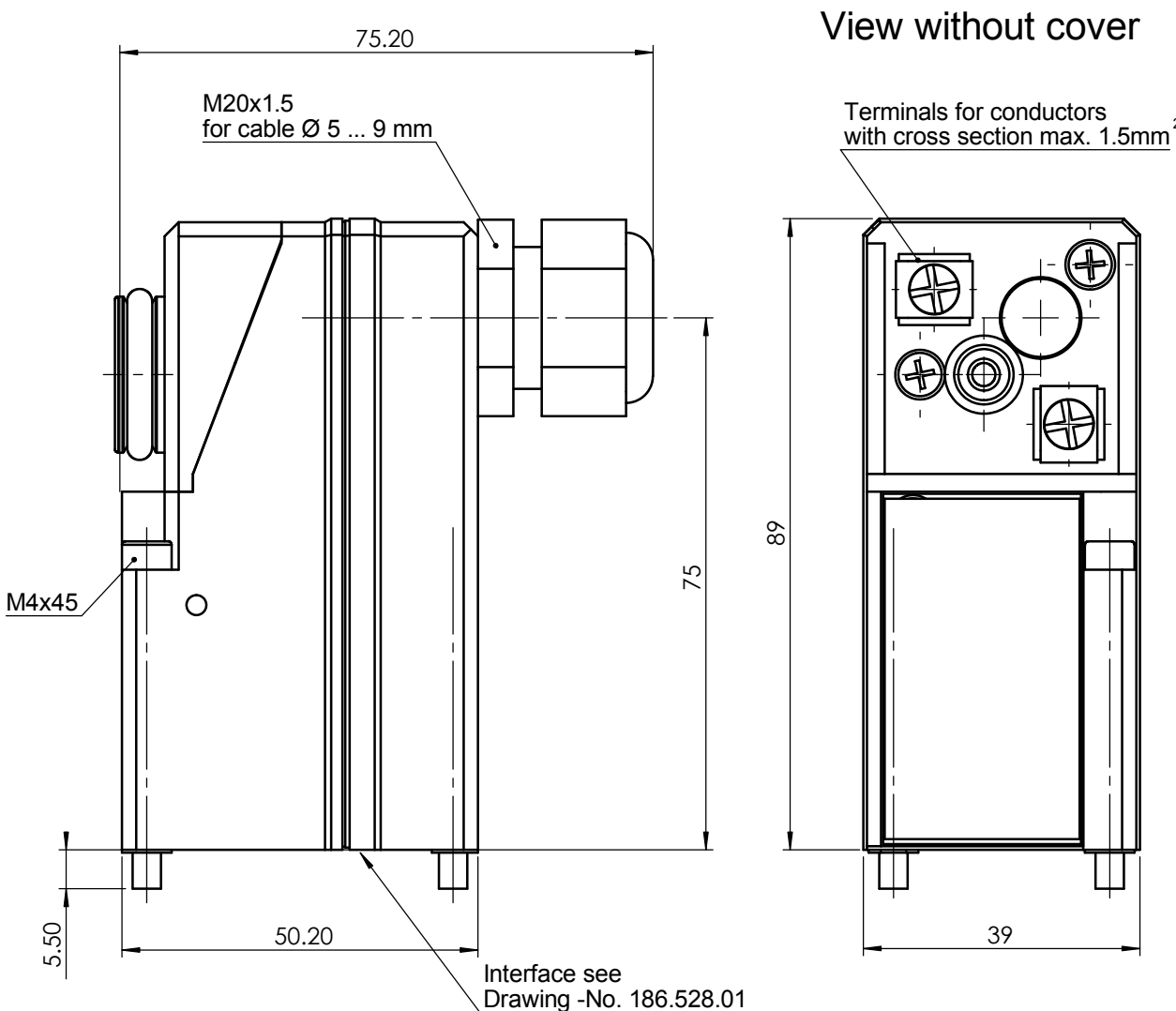


3/2-way pilot valve

Pilot operated

Pneumatic symbol 	PG	DW PV		Type		
	Function	3/2 NC	ND	KV	Pressure	Manual control
	Medium	Dry, filtered air		0.1 m ³ /h	2 ... 6 bar	none
Circuit diagram 	Ambient and media temperature	-30 °C ... +60 °C		Minimum values for function		
	Degree of protection according to EN 60 529	IP65		Maximum values for "intrinsic safety"		
	Remark	- Ex II 2 G EEx ia IIC T6 - PTB 00 ATEX 2030				
			2 mm	<0.3 Nm ³ /h	Weigh 0.22 kg	
				6.4 V / 1.5 mA / 9 mW		
				Ui = 40 V / li = 200 mA / Pi = 850 mW		



Mass- und Konstruktionsänderung vorbehalten

Das Urheberrecht an dieser Zeichnung verbleibt unserer Firma

Datasheet

3D ID: 161.776.00

Selection sheet	4-127.677.00		Release	02		Drawn	07.04.2004	prm - Presente
Drawing class	G-Ex		Modification-No.	4931		Proved	07.04.2004	rej - Reimann
Scale	1:1		Modified	11.12.2006	hep - Hediger	Size	Drawing - /Part-No.	
Sheet	1	from 1	Data core	07.04.2004	fir - Fischer	4		127.434.02
							Language	en

easem-ventilmb.de