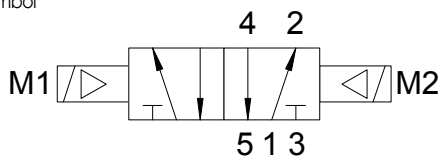


# 5/2 way solenoid valve

Pilot operated with own fluid

Group CP 06

Symbol

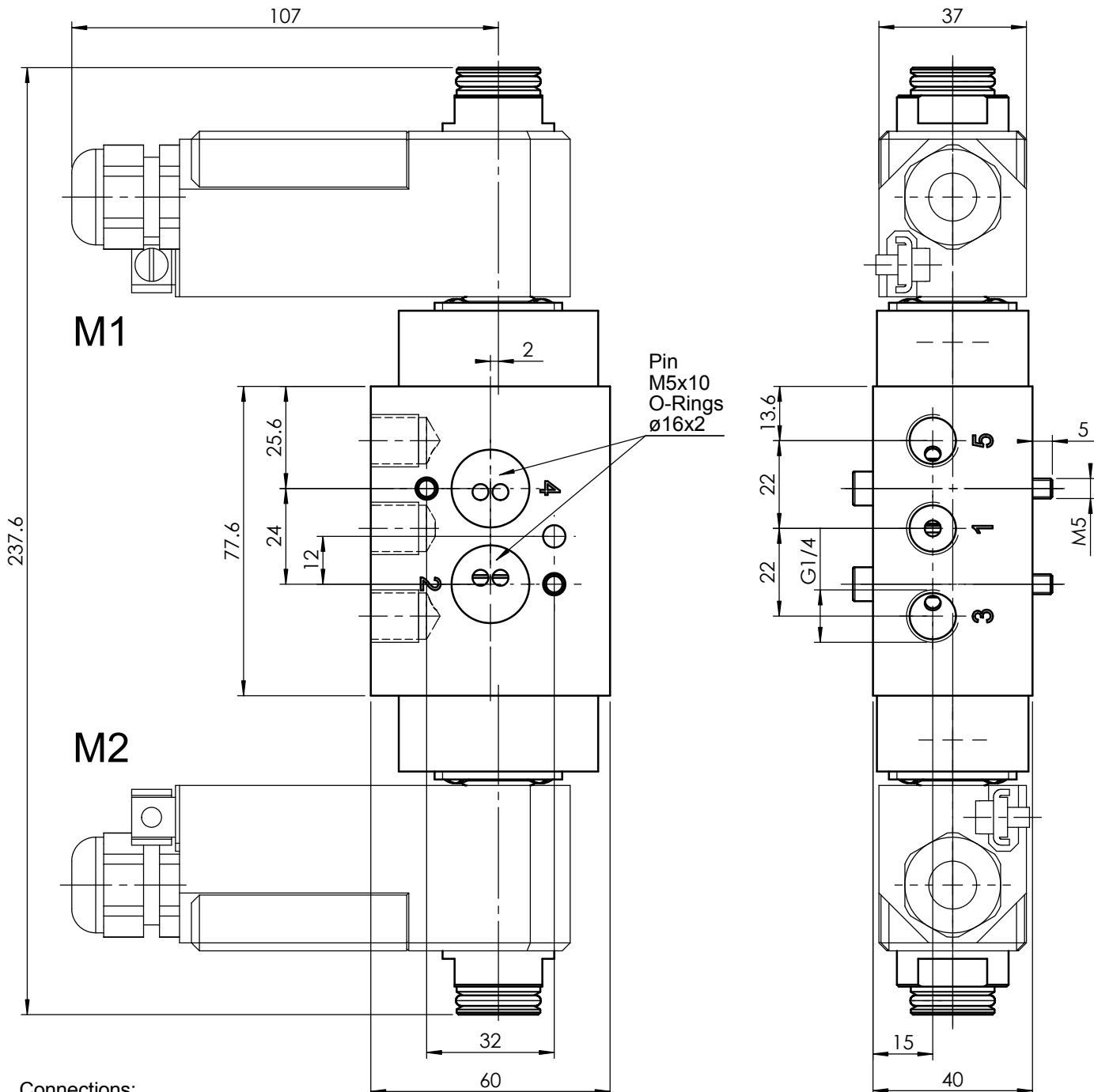


Remarks  
 - bistable  
 - with NAMUR-Interface  
 - incl. mounting-set  
 - Solenoid can be rotated through 360°

Type

**CP 0652 BNE oH**

Orifice <b>6</b>	Solenoid size <b>11 / 1.8W</b>	Manual control <b>none</b>
Function	Drawn solenoid <b>52, 53</b>	Weight without solenoid <b>0.79kg</b>



**Connections:**

- 1 = Inlet: G1/4
- 2 = Consumer: NAMUR
- 3 = Outlet: G1/4
- 4 = Consumer: NAMUR
- 5 = Outlet: G1/4

DN [mm]	Kv [m³/h]	Pressure gas [MPa]
6	0.66	0.2 ... 0.8

**Layout**

3D ID: 174.085.00

Selection sheet		126.171.00		Release		01		Drawn		01.09.2005		ksb - Kuster Sold	
Drawing class				Modification-No.		OHNE		Proved		16.09.1999		ror - Rölli	
Scale	1:1.5			Modified	01.09.2005	ksb - Kuster Sold		Size	Drawing-/Part-No.			Language	
Sheet	1	from	1	Administration	15.09.2005	fir - Fischer		<b>4</b>	<b>126.172.02</b>			en	

Subject to dimensional or design modification

Copyright on this drawing remains in our company

o4sm-ventil-imb-en